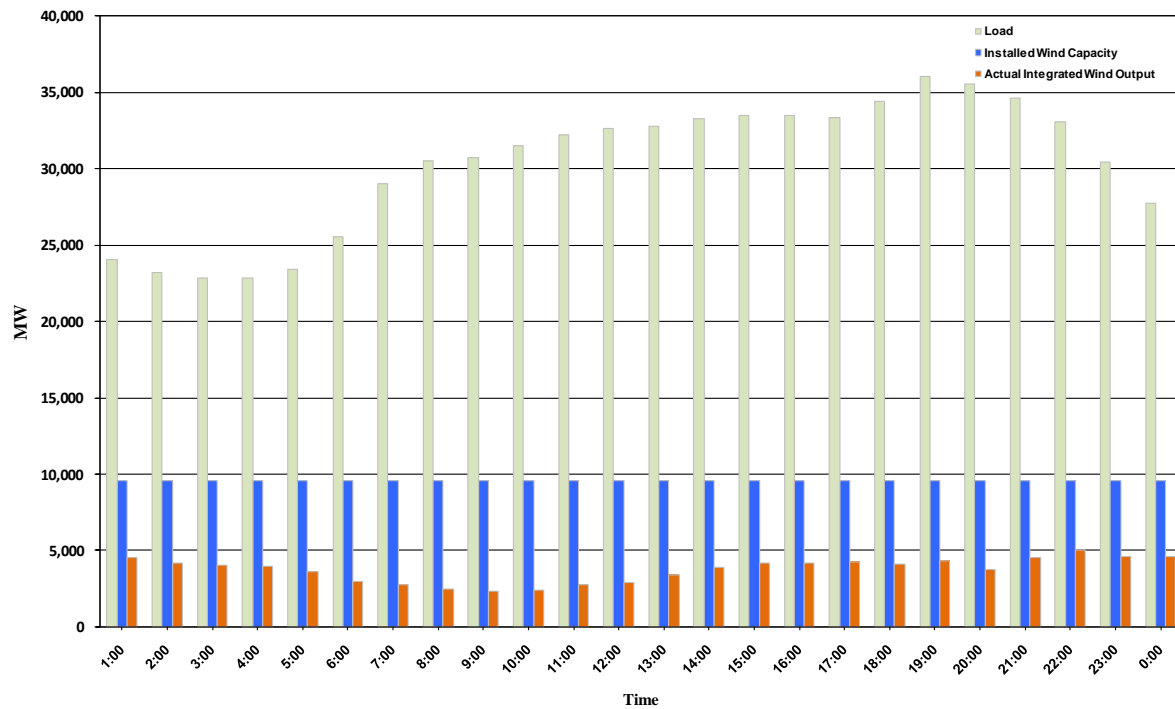




ERCOT Grid Operations Wind Integration Report: 11/29/10

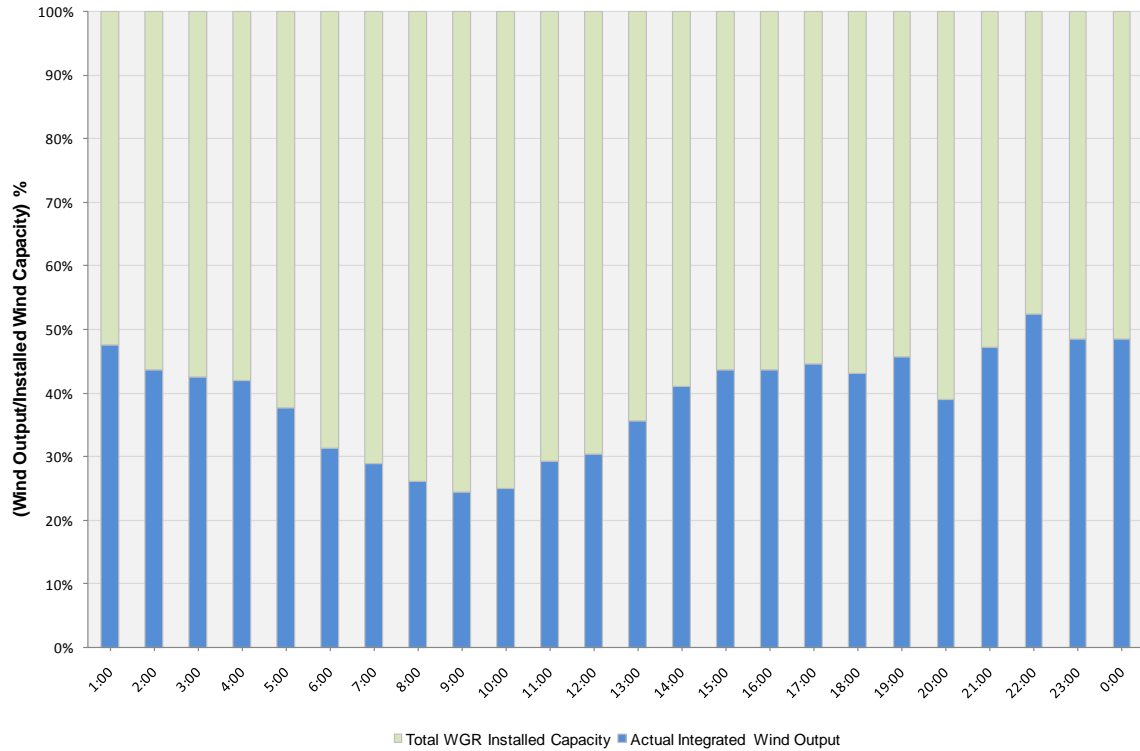
Peak Load	36,068 MW
Load Peak Hour	19
Wind Record 06/12/10	7016 MW
Max Wind value	5605 MW
Wind Peak Hour	21:17:16
Wind Integration %	16.69

Hourly Average Actual Load vs. Actual Wind Output
11-29-2010

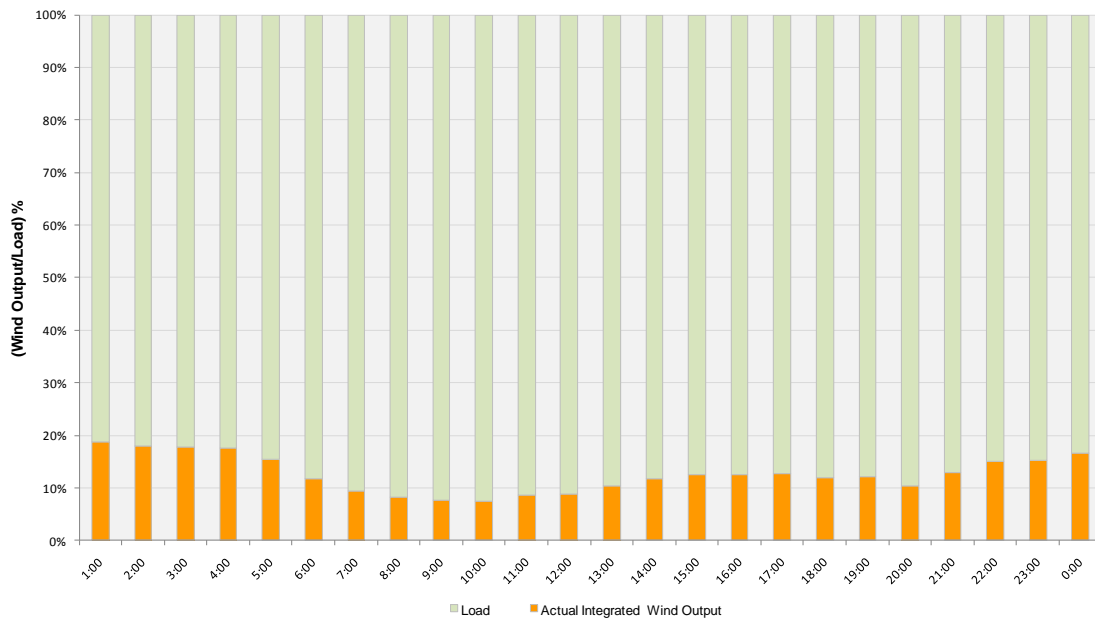




Actual Wind Output as a Percentage of the Total Installed Wind Capacity
11-29-2010



Actual Wind Output as a Percentage of the ERCOT Load
11-29-2010





ERCOT Load vs. Actual Wind Output 11/22/10 - 11/29/10

